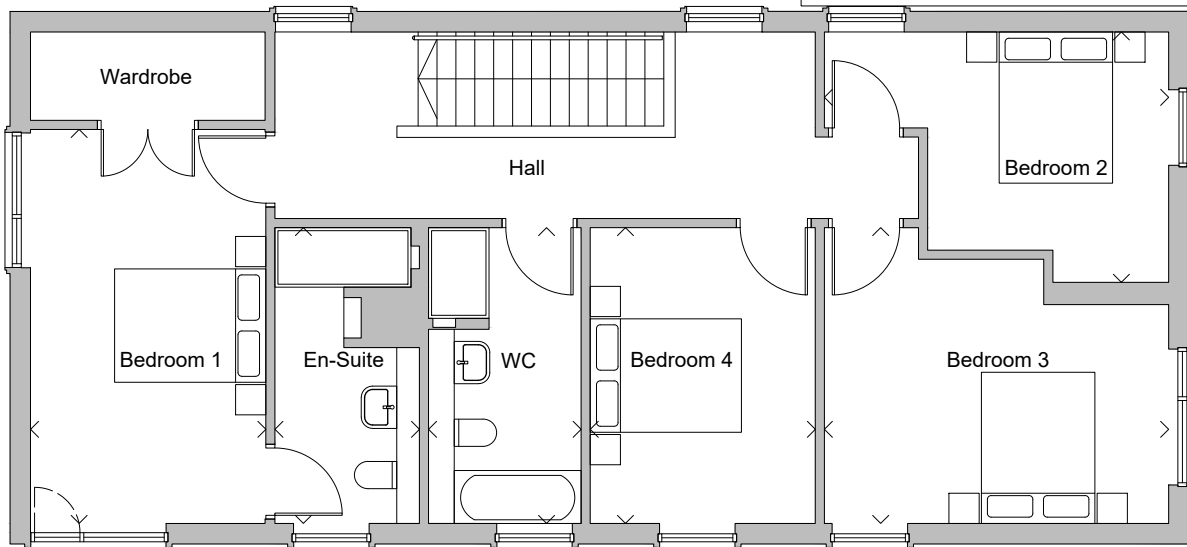
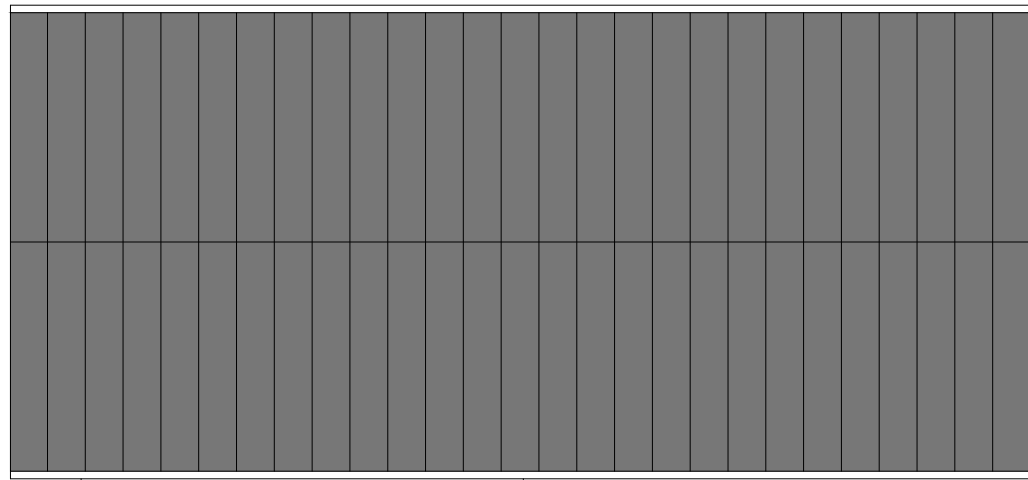
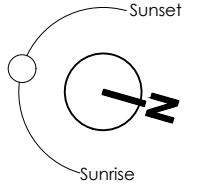


ATHRON HILL

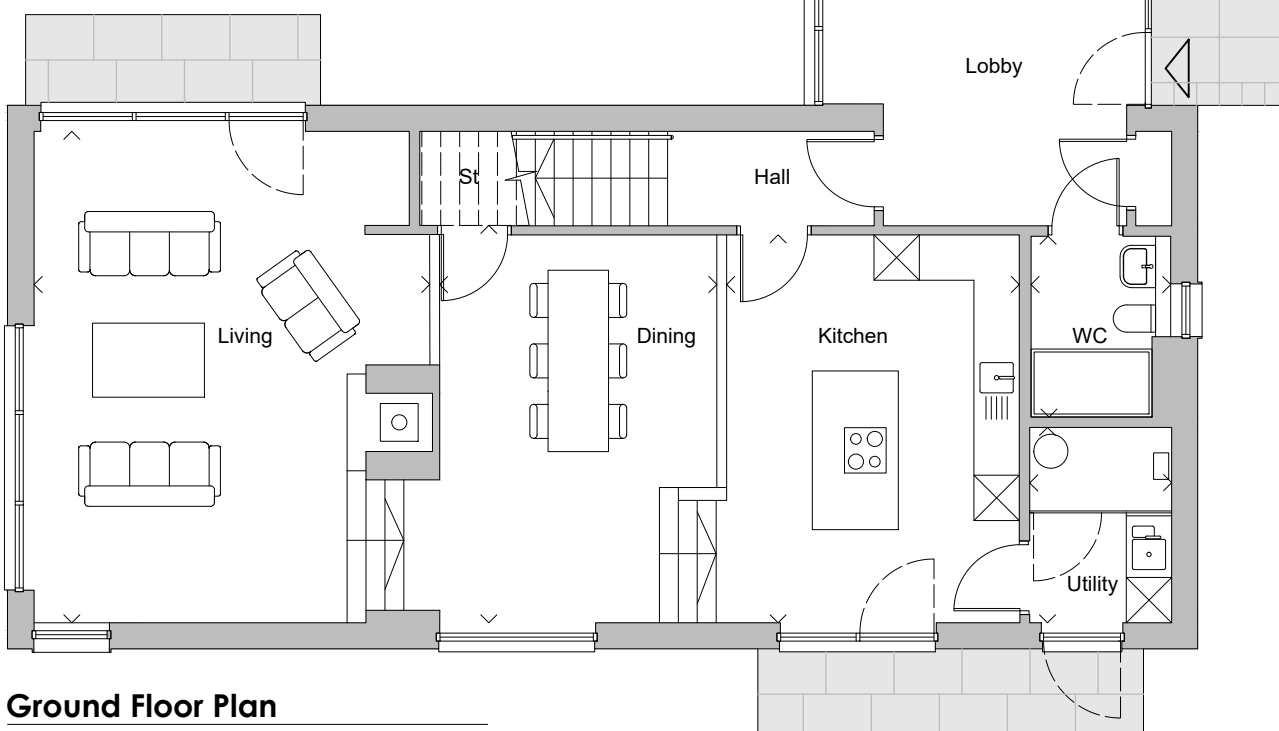
0 1 2 3 4 5m

Scale 1:100 @ A3



First Floor Plan

Space	Metres	Feet
Living	5.23 x 6.49	17'2" x 21'3"
Dining	3.66 x 5.13	12'0" x 16'10"
Kitchen	3.87 x 5.13	12'8" x 16'10"
Utility	1.87 x 2.58	6'1" x 8'5"
WC	1.84 x 2.39	6'0" x 7'10"
Cinema Room	3.46 x 5.37	11'4" x 17'7"
Bedroom 1	3.11 x 5.21	10'2" x 17'1"
En-Suite	1.91 x 3.91	6'3" x 12'10"
Bedroom 2	4.55 x 3.31	14'11" x 10'10"
Bedroom 3	4.55 x 3.91	14'11" x 12'10"
Bedroom 4	2.97 x 3.91	9'9" x 12'10"
Bedroom 5	3.17 x 5.37	10'5" x 17'7"
Bathroom	2.01 x 3.91	6'7" x 12'10"
Garage	5.68 x 5.46	18'7" x 17'11"
Internal Ground Floor	144.2 m ²	1,553 sq ft
Internal First Floor	97.8 m ²	1,053 sq ft
Internal Garage	31.0 m ²	334 sq ft
Total Internal (excluding garage)	242.0 m ²	2,605 sq ft



Ground Floor Plan



The specification and layout of each plot may vary from those shown. Floor layouts are indicative for marketing purposes only. All dimensions, metric and imperial, are taken from points as indicated on the floorplans and are for guidance only. Please ask the sales advisor for current plot specific details prior to reservation.

PLOT No.24